

# ARIES

INDUSTRIES, INC.

## PRODUCT OVERVIEW



raising the bar **UNDERGROUND**



**HIGH DEFINITION**  
**VOYAGER™**  
BY ARIES INDUSTRIES

## Voyager™ HD Mainline Inspection System

Capture detailed high-definition video of mainline conditions quickly and accurately. The Voyager™ HD System powers through debris and steers past obstacles to capture detailed, high-definition video of mainline conditions. The system combines a durable tractor, full HD 1080p WiperCam™ camera, and 1200' cable reel—all operated by a CANbus controller for unmatched responsiveness.

### Voyager™ HD WiperCam™ Camera

Delivers unmatched clarity to ensure no detail is missed.

- Pan and tilt 1080p full HD video camera
- 120x zoom capability
- Built-in lens wiper technology
- Continuous 360° dual-access camera rotation

### Tractor

Powers through debris and around obstacles.

- All-wheel drive and instantaneous response
- Rear-viewing HD camera
- Multiple wheel configurations and integral camera lift
- Fits pipes relined 6"-48" and larger

### Controller

Maximizes responsiveness and provides all-in-one operation of the reel, tractor, and camera.

- CANbus controls for instantaneous camera and crawler response
- Ergonomically advanced joysticks
- 7" touchscreen displays system status
- Handheld pendant near reel for rear controls and diagnostics

### Reel

Extends your reach and minimizes set ups.

- Truck-mounted reel with Aries Cable Management System
- 1200' of 6-conductor cable
- Simple 6-wire resinless cable termination and one-button downrigger deployment

### Mobile



## Mobile Voyager™ HD Mainline Inspection System

Take your HD mainline inspections wherever you need to go with the Mobile Voyager™. The compact reel has 800' of cable and can be carried in a pick-up truck bed or mounted in a truck, van, trailer, or Aries TrailBlazer Mobile Enclosure for maximum flexibility. The hand-held controller with 15" daylight readable touchscreen display and ergonomically advanced thumbsticks is CANbus enabled for instantaneous camera and tractor response. Optional green battery powerstation or gas generator.



## Pathfinder Mainline Inspection System

The Pathfinder Mainline Inspection System is an innovative truck-mounted system for inspecting mainlines 6" or larger. It combines a powerful transporter, innovative camera, and heavy-duty reel. Operators have complete control through the Aries Master Controller—a single unit to control the tractor, camera and to supply power to the lights. Includes an Xbox-style controller for remote operation.

### WiperCam™ Pan & Tilt Camera

Delivers a full, detailed view of the pipe.

- Continuous 360° dual-access camera head rotation
- 120x zoom and high intensity LED light ring gives full visibility of pipe details
- Self-cleaning lens system and field replaceable wipers for more time in the pipe

### Pathfinder Series Transporter

Includes a rugged, steerable, self-propelled tractor from our Pathfinder Series.

- Choice of three Pathfinder models to match pipe size
- Equipped with a rear-viewing camera and electric camera lift
- Multiple wheel configurations to adapt to pipe conditions

### Master Controller

Eliminates the need for multiple controllers with a single source of operation and power.

- Rack-mounted, power supply and control unit
- Simultaneously operates tractor, reel, and camera
- Remote operation via wireless Xbox-style controller

### Reel

Maximizes time in the field with an extended reach.

- Weatherproof for maximum durability
- Truck-mounted reel in heavy duty frame
- 1000' or 1200' of low-friction, multiconductor cable extends your reach

## Mobile Pathfinder Inspection System

Get the capabilities of the Pathfinder Mainline Inspection System, but in a portable version. A lightweight reel with 1000' of cable gives the Mobile Pathfinder System its portability. The mobile system includes an all-in-one remote control to operate the reel, tractor, and camera.



Mobile

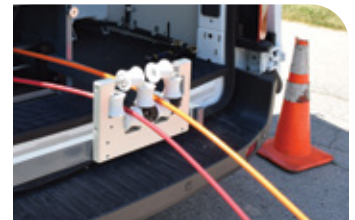
Get more product information at [kellarequipment.com](http://kellarequipment.com) or call (909) 414-6996.




**LETS6.0**

## LETS 6.0<sup>®</sup> (Lateral Evaluation Television System)

Mainline and lateral inspection system is built to maneuver in tough conditions. Agile and versatile, the LETS 6.0<sup>®</sup> System enables inspections of laterals up to 150' from mainlines 6" or larger. Maximize your time in the pipe by capturing mainline and lateral conditions simultaneously. Powerful lateral camera launches with or against the flow at a 135° angle.



### Mainline & Lateral Cameras

Captures details in mainlines and laterals simultaneously.

- Forward-facing camera captures mainline conditions and monitors lateral camera launch
- Two lateral camera options: self-leveling or Pan & Tilt with in-the-pipe lens cleaning technology
- Rear-view camera monitors push cables and tractor retrieval

### Tractor

Maneuvers through pipe and debris with ease.

- Powerful, self-propelled slim tractor for maximum agility
- Multiple wheel configurations match pipe sizes
- Contoured chute for 135° launch angle with or against the flow

### Controller

Puts complete system control in the palm of your hand.

- Operate tractor and cameras with one controller
- Dual joystick, Xbox style controller

### Reel

Accelerates the pace of inspections with fast set ups and extended reach.

- Truck-mounted, stacked reels free up vehicle floor space
- Reel controls in single accessible panel
- Simple termination blocks and single button downrigger deployment



## Wolverine® 2.0 Self-Propelled Robotic Electric Cutting System

The Wolverine® 2.0 Cutting System is a powerful cutter for the reinstatement of laterals or pre-lining prep work in pipes 6"-24" diameter. It navigates harsh conditions and cuts with power and accuracy. Designed for easy maintenance in the field.

### Camera

Keeps the view of the pipe clear for easy navigation and cutting.

- Fixed lens with field replaceable glass
- Built-in lens wiper and scraper for in-the-pipe lens cleaning
- Adjustable LED lighting

### Controller

Advanced operator control and maximum precision.

- Fingertip control for outstanding ergonomics
- Dual joysticks for accurate cutting head positioning
- CANbus technology

### Tractor

Built to withstand the rigors underground.

- All-wheel drive and compact profile to navigate challenging pipe conditions
- Equipped with a powerful, electric 1kw@7000-12000 RPM milling motor
- Infinitely adjustable speed and axis movement for precision cutting

### Reel

Extended cable length maximizes productivity.

- 850' coax cable reduces truck set-up time
- Cable made of Kevlar®, Nylon, Hytrel® and Polyurethane
- Truck-mounted



### Grouting System Truck

Customize a high cube truck with our complete grouting system. Aries grouting equipment pumps chemicals under pressure to the packer in the pipeline. Includes a complete TV inspection system to monitor the grouting process.

### Grouting System Truck Includes:

- High-power winches to move the packer between joints quickly
- 800' grout house for multiple run set-ups from a single-entry point
- High-volume, electric CAT triplex pumps for precise grout delivery
- Simple push-button operation for grouting and inspection equipment
- 60-gallon grout tanks with continuous-duty mixers for fast chemical mixing
- Simple, push-button operation reduces test and seal time
- Easy to read gauges keep operator informed on flows and pressures





**Custom-built  
and tailored to  
your specific  
needs for  
maximum  
productivity  
in the field.**

## Choose Your Ride.

Get the right size vehicle for your specific need. Our skilled technicians outfit high-cube trucks, vans, and trailers with our innovative pipeline inspection and rehabilitation equipment. We've considered every detail to provide operator comfort, safety and easy access to equipment and extras.



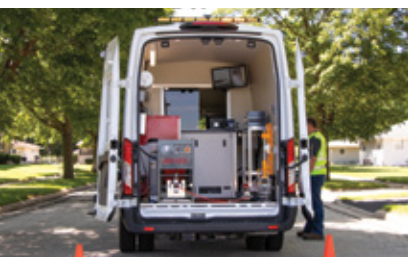
### Control Room Features

- Spacious workspace with adjustable LED lighting
- Laminate desk with chair
- Desktop or wall-mounted monitors
- Sliding bulkhead window for ease of communication and visibility
- Climate controlled with standard ceiling-mounted air conditioning
- Secure cabinetry with adjustable shelving
- Durable flooring and cleanable walls



### Equipment Room Amenities

- Expansive area for equipment, storage and workspace
- Heavy-duty flooring and easy-clean walls
- Toolbox with workbench and vise
- GFI plug outlet system for operator safety
- Wall-mounted storage rack
- Pole storage
- Wash down system



**Get your truck the way you need it.**

### Streamlined Customizations

What really sets Aries vehicles apart is the wide range of customization options we can offer. From extra lighting, additional storage, to climate control and safety features, we make sure the vehicle you get is the one your crew needs to maximize their time in the field.

- Bulkhead door
- Extra lighting
- Additional cabinetry or shelving
- Climate control options
- Sink / bathroom (high-cube trucks only)

### TrailBlazer Mobile Enclosure

The TrailBlazer is all about access. Go where larger vehicles cannot with a complete sewer inspection system— all stored in a compact, organized and lightweight secure enclosure. Mount on an ATV, pick-up truck or trailer to efficiently inspect mainlines in hard-to-reach areas.

- Outfit with a Mobile Voyager™ HD Mainline Inspection System or a Mobile Pathfinder System
- Choice of sunlight-readable monitors
- 33' pole set
- Optional green battery powerstation or gas generator



### Retrofit Services

Extend the useful life of your existing vehicle with Aries' Retrofit Services. Our skilled team can upgrade or replace pipeline inspection and rehabilitation equipment to add to your capabilities. Other refreshes include new storage, lighting, flooring, walls, and more.

- Flexible options: small modifications or full build out
- Quick turnaround
- New warranty for new equipment



ARIES INDUSTRIES

# TOTAL SUPPORT

Expert support where & when you need it the most.



Maximizing uptime is critical, so we make sure that you have easy access to friendly and fast service, parts, and support. Thanks to our extensive dealer network, qualified service technicians are ready to help wherever and whenever you need it.

### Technical Support

- Qualified team of problem-solvers accessible via phone or email
- State-of-the-art, live video diagnostic tools

### Loaners

- 200+ pieces of equipment, including cameras tractors, controllers, reels
- Loaners ship quickly

### Parts

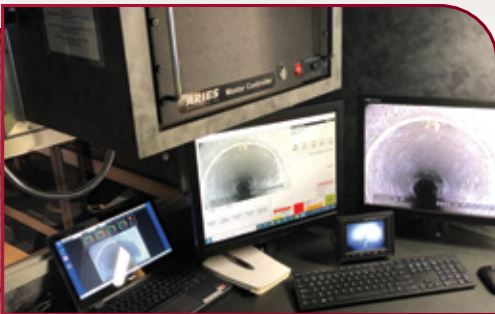
- Extensive inventory of replacement parts
- US-based for fast shipping and real-time tracking

### Repairs

- Easy access at 20+ North American dealers or at Aries' WI, CA, or Ontario, Canada facilities
- On-site troubleshooting and repair assistance on request

### Training

- On-site start-up training
- Video and live learning opportunities



### Software Solutions

Aries Industries equipment is compatible with any software. We provide a variety of industry-leading software for reliable reporting of sewer inspection results.

**ARIES**

# KELLAR



# EQUIPMENT

**Kellar Equipment**

34075 Avenue J  
Yucaipa, CA 92399  
(909) 414-6996